



## FEC HELIPOINTS & HELIPOINT EQUIPMENT

Designed, Manufactured and Installed...we do it all.

### Ground Mounted Perimeter Light

Perimeter lights are one of the most important safety features on your heliport. They are used to mark and illuminate the FATO and TLOF. Our lights also help the pilot locate your heliport to safely land during night operations and inclement weather conditions. Ground mounted perimeter lights attach directly to the surface with your attachment hardware.

#### Technical Details:

**Operating voltage:** 120V to 277V, 50/60Hz

**Maximum Power Consumption:** 6 watts, .2 amps @ 120V  
6 watts, .1 amps @ 277V

**Operating temperature:** - 13F to 122F  
- 25C to +50C

**Operating LED Lifespan:** Rated at 50,000 hours

**Light Source:** Omni-directional LED Lamp  
3x Osram OSLO<sup>TM</sup> SSL 1500 LEDs  
Average power consumption 3.5W  
350mA constant current supply  
2" (50mm) diameter aluminum circuit  
RoHS and 94VO compliant

#### Optional:

##### Standard Colors:

HP0590G True Green (528nm)  
HP0505G Blue (470nm)  
HP0504G White 6000K  
HP0507G Yellow/Amber (590nm)

##### NVG Compatible:

HP0790G 3 True Green LEDs + 2 IR LEDs  
(IR LEDs 850nm)

#### Key Features:

- High-visibility yellow cast aluminum body suitable for the harshest environments
- High tempered glass lens for high visibility and safer operations
- Pre-wired for quick and easy installations
- Degree of protection IP66

#### Standards/Certification:

- CAP 437
- ICAO Annex 14
- FAA & CAA
- UL1598
- ETL





## FEC HELIPOINTS & HELIPOINT EQUIPMENT

Designed, Manufactured and Installed...we do it all.

### NVG Characteristics:

**Maximum Power** 6 watts, .2 amps @ 120V

**Consumption:** 6 watts, .1 amps @ 277V

**Notes:** All NVG compatible lights will come with a CLEAR lens. This will allow the IR LEDs to pass through the glass unobstructed.  
5.5W power consumption (@350mA)

### Physical Characteristics:

#### Dimensions:

**Height** 4 1/16 inches(103.77mm)

**Outside Diameter** 3 7/8 inches(98.43mm)

#### Materials:

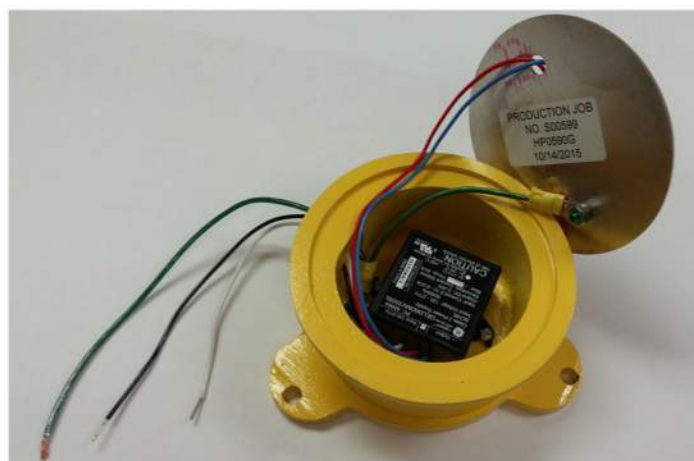
**Lens** Tempered Glass

**Casting** 356 T6 Aluminum Alloy

**Powder coat** SW NL YELLOW PYS8-C8289

**Notes:** All machining on the Aluminum casting is done in house by FEC Heliports

**Shipping weight:** 3lbs.





# FEC HELIPORTS & HELIPORT EQUIPMENT

Designed, Manufactured and Installed...we do it all.

## Replacement Kits/Parts:

### Kits:

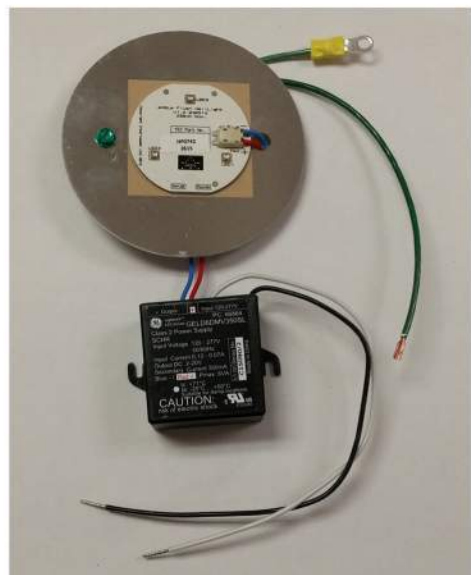
- HP0560G Green LED board with Driver
- HP0561G White LED board with Driver
- HP0568G Yellow/Amber LED board with Driver
- HP0569G Blue LED board with Driver
- HP0760G Green/IR LED board with Driver

### Lens:

- HP0555-1 Green
- HP0555-2 White
- HP0555-3 Yellow/Amber
- HP0555-4 Blue

### Misc. Parts:

- HP0108 Squeeze Clamp
- HP0114 Globe/Base Gasket
- HP0613 Ground Style Light Base





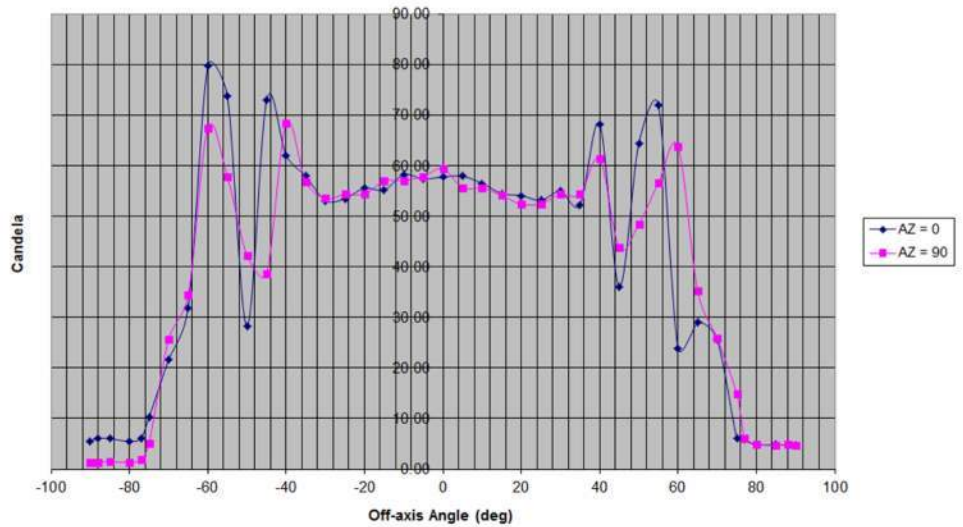
# FEC HELIPORTS & HELIPORT EQUIPMENT

Designed, Manufactured and Installed...we do it all.

## Summary intensity by bins

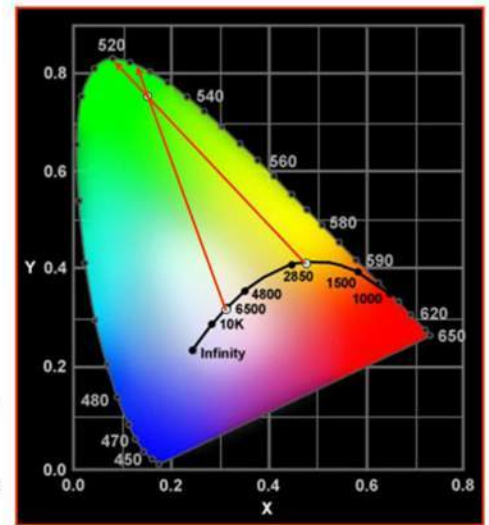
Results of the measurements are summarized in figure 4 which is formatted to correspond to Annex 14, illustration 6 (Touchdown and lift-off area perimeter lights). Note that the data tabulated in figures 2 and 3 are plotted based on "off-zenith" angle. Figure 4 is summarized based on "elevation" angle where 0° is at the horizon.

Elevation	Measured Intensity
20° < E < to 90°	21.6 cd min
13° < E < to 20°	1.8 cd min
10° < E < to 13°	1.3 cd min
5° < E < to 10°	1.3 cd min
2° < E < to 5°	1.3 cd min



## CIE Color Coordinate HP0790G

- Average CIE color coordinate
  - x = 0.16
  - y = 0.76
- Dominant Wavelength relative to Illuminant A (x = 0.4475, y = 0.4075)
  - 520 nm
- Dominant Wavelength relative to 6500 K
  - 527 nm



## Total Light Output

The integrated light output was calculated to be 227 lumens. This was calculated based on two elevation sweeps at azimuth angles of 0 degrees and 90 degrees. Readings were integrated over the closest 5 degree spherical section. The variations in the illuminance plots make the lumen integration less accurate than for a similar well-behaved curve. Please note that the term "lumen" assumes that the light covers the photopic spectrum which is not the case for this saturated green LED light.



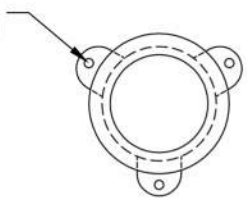
# FEC HELIPORTS & HELIPORT EQUIPMENT

Designed, Manufactured and Installed...we do it all.

### NOTES:

- 1) (3) 16 GAUGE WIRES
  - (1) BLACK
  - (1) WHITE
  - (1) GROUND

5/8" (7.9375mm) DIA. HOLE  
ON A 5 1/2" (139.7mm) B.C.,  
(3) PLACES AS SHOWN

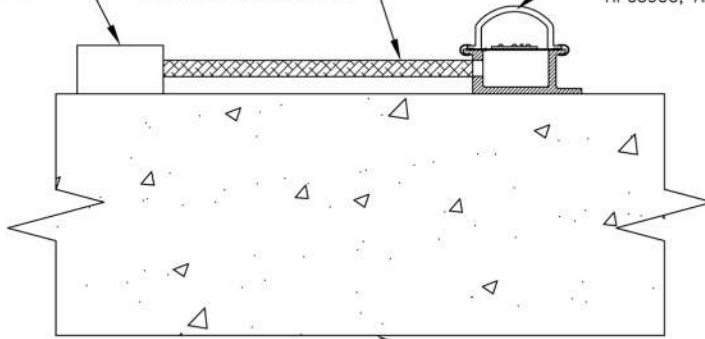


- 2) 1" (25.4mm) NPT LOCATED ON SIDE  
OF GROUND STYLE AND BOTTOM OF  
POLE STYLE

JUNCTION BOX TO BE  
PROVIDED AND INSTALLED  
BY ELECTRICAL CONTRACTOR.

FLEXIBLE CONDUIT TO  
BE PROVIDED BY  
ELECTRICAL CONTRACTOR.

TYPICAL LIGHT SURFACE  
MOUNTED, HP0504G, HP0505G,  
HP0506G, HP0507G, HP0582G  
HP0590G, AND HP0790G



MOUNTING SURFACE CAN  
BE STEEL, CONCRETE,  
CONCRETE PAVER BLOCK,  
SAFETY NETTING OR  
OTHERS

## Mounting Notes:

- Use watertight conduit and conduit fittings  
in power source wiring
- 5 1/2 inch bolt circle for mounting (139.7mm)

