



FEC HELIPORTS & HELIPORT EQUIPMENT

Designed, Manufactured and Installed...we do it all.

Externally Lit Windcone

FEC's Externally Lit Windcone meets the FAA AC 150/5324-27C and ICAO Annex 14 design requirements. It is made of high strength, lightweight aluminum for durability in all environmental conditions. The hinged base on FEC's wind cone allows for easy accessibility when maintenance is needed. The base/ pole are powder coated orange for high visibility and long-lasting protection. Our windcones can be installed on any surface. Optional mounting base available for structural connections.

Technical Details:

Operating voltage: 120V to 277V, 50/60Hz

Maximum Power Consumption: 78 watts, .65 amps @ 120V
78 watts, .28 amps @ 277V

Operating temperature: - 13F to 122F
- 25C to +50C

Operating LED Lifespan: Rated at 50,000 hours

Light Source:

Floodlights: (4)LED Par 38 Spotlight, COB, 18w, Clear

Obstruction Light: (1)Omni-directional LED Lamp
3x Osram OSLONTM SSL 1500 LEDs
Average power consumption 3.5W
350mA constant current supply
2"(50mm) diameter aluminum circuit
RoHS and 94VO compliant

Physical Characteristics:

Dimensions:

Height: 10' (3.048 m) from base to top
CUSTOM SIZES AVAILABLE

Base: (4) 3/4" (19.05mm) holes on a 7" (177.8mm) bolt circle

Shipping weight: 50lbs.





FEC HELIPOINTS & HELIPOINT EQUIPMENT

Designed, Manufactured and Installed...we do it all.

Replacement Parts:

Kits:

HP0562 Red LED board with Driver

Misc. Parts:

HP0192-18x6 (18" x 6') Replacement Windsock

HP0192-18x8 (18" x 8') Replacement Windsock

HP0582P Red LED Obstruction Light

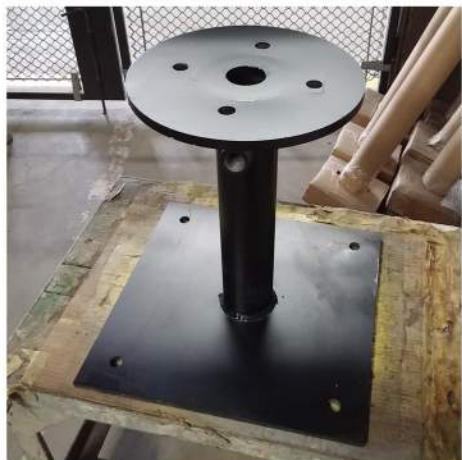
HP0721 18 watt LED Par 38 Spotlight

Optional:

HP0333 Windcone Roof Mounting Base



HP0721 LED Par 38 Spotlight



HP0333 Mounting Base



HP0192 Replacement Windsock



FEC HELIPOINTS & HELIPOINT EQUIPMENT

Designed, Manufactured and Installed...we do it all.

