



FEC HELIPORTS & HELIPORT EQUIPMENT

Designed, Manufactured and Installed...we do it all.

Ground/Pole Mount LED Replacement Kit

This replacement kit consists of the LED light board mounted on a heat sync and pre-wired to the LED driver.

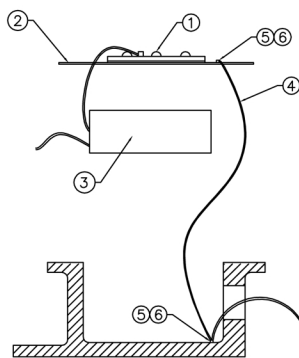
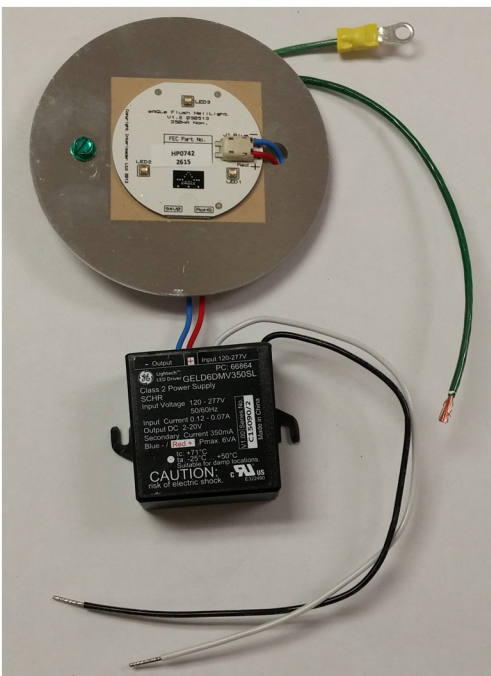
- HP0560G replaces HP0506G and HP0506P (Green)
- HP0560G replaces HP0590G and HP0590P (Green)
- HP0568G replaces HP0507G and HP0507P (Amber)
- HP0569G replaces HP0505G and HP0505P (Blue)
- HP0561G replaces HP0504G and HP0504P (White)
- HP0562G replaces HP0582G and HP0582P (Red)

Heat Sink Dimensions:

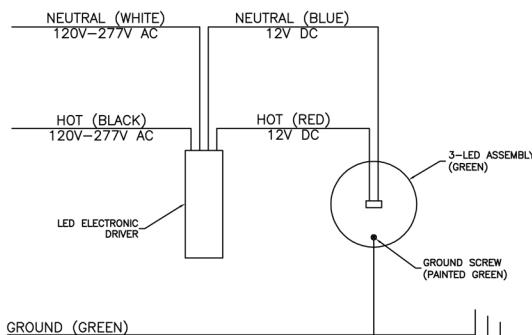
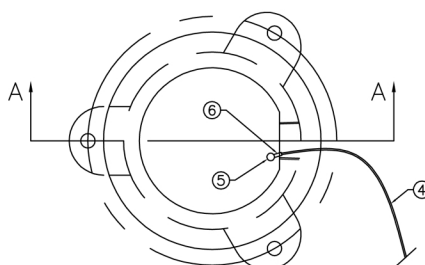
Height 1/8" [3.18mm]
O.D. 3 15/16" [100.00mm]

Materials:

LED Board HP0742
Alum. Heat Sink HP0443
LED Driver HP0630



VIEW A-A



WIRING DIAGRAM

THIS DOCUMENT IS THE PROPERTY OF FEC HELIPORTS, A DIVISION OF FEDERAL EQUIPMENT COMPANY, CINCINNATI OHIO. INFORMATION CONTAINED ON THIS DOCUMENT SHALL NOT BE DISCLOSED TO OTHERS, USED FOR MANUFACTURING, OR REPRODUCED FOR ANY REASON WITHOUT THE EXPRESSED WRITTEN PERMISSION OF FEC HELIPORTS, A DIVISION OF FEDERAL EQUIPMENT COMPANY.

REVISION BLOCKS

REVISION	DATE	DESCRIPTION OF REVISIONS & ADDITIONAL NOTES	REVISED BY
A	3/17/11	MADE CHANGES PER EQUIPMENT UPDATES (UPDATED DRIVER)	***
B	6/18/14	MADE CHANGES PER EQUIPMENT UPDATES (UPDATED DRIVER)	***

QUALITY CONTROL NOTES

1. TURN LIGHT ON TO VERIFY IT FUNCTIONS PROPERLY

6	2	GROUND SCREW TERMINAL	HP0507F-8
5	2	SCREW, GROUNDING	HP0508-7
4	2	WIRE, GROUND, GREEN	HP0247
3	1	LED ELECTRONIC DRIVER	HP0630
2	1	ALUMINUM HEAT SINK	HP0443
1	1	3-LED ASSEMBLY (GREEN)	HP0742
ITEM	QTY	DESCRIPTION	PART NO.

PARTS LIST



A Division of
Federal Equipment Company.
5298 River Rd.
Cincinnati, Ohio 45233
(513) 621-5280
(513) 621-0524 Fax
www.FECHeliports.com

REPLACEMENT PARTS FOR LED GREEN PERIMETER LIGHT ASSEMBLY, GROUND MOUNT STYLE AND POLE MOUNT STYLE

DRAWN BY: TWS	CHECKED BY: JUS	APPROVED BY: TS
DATE: 6/8/09	DWG SIZE: A	REV LTR: B
SCALE: N/A	HP0560G	