



FEC HELIPORTS & HELIPORT EQUIPMENT

Designed, Manufactured and Installed...we do it all.

Ground Mounted Obstruction Light

Obstruction lights are an important safety feature of any helipad. They are used to mark and illuminate any potentially intrusive objects that may be a danger to the pilots as they approach the landing area. Ground mounted obstruction lights can be mounted directly to any surface using your attachment hardware.

Technical Details:

Operating voltage: 120V to 277V, 50/60Hz

Maximum Power Consumption: 6 watts, .2 amps @ 120V
6 watts, .1 amps @ 277V

Operating temperature: - 13F to 122F
- 25C to +50C

Operating LED Lifespan: Rated at 50,000 hours

Light Source: Omni-directional LED Lamp
3x Osram OSLONTM SSL 1500 LEDs
Average power consumption 3.5W
350mA constant current supply
2"(50mm) diameter aluminum circuit
RoHS and 94VO compliant

Standard Color:

HP0582G Red (632nm)

Key Features:

- High-visibility yellow cast aluminum body suitable for the harshest environments
- Prewired for quick and easy installations





FEC HELIPORTS & HELIPORT EQUIPMENT

Designed, Manufactured and Installed...we do it all.

Standards/Certification:

- CAP 437
- ICAO Annex 14
- FAA & CAA
- UL1598
- ETL

Physical Characteristics:

Light Fixture:

Dimensions:

Height 7 1/16" (177.8mm)
Outside Diameter 3 7/8" (98.43mm)

Materials:

Lens Tempered Glass
Casting 356 T6 Aluminum Alloy
Powder coat SW NL YELLOW PYS8-C8289

Notes: All machining on the Aluminum casting is done in house by FEC Heliports

Shipping weight: 4lbs.





FEC HELIPORTS & HELIPORT EQUIPMENT

Designed, Manufactured and Installed...we do it all.

Replacement Kits/Parts:

Kits:

HP0562G Red LED board with Driver

Lens:

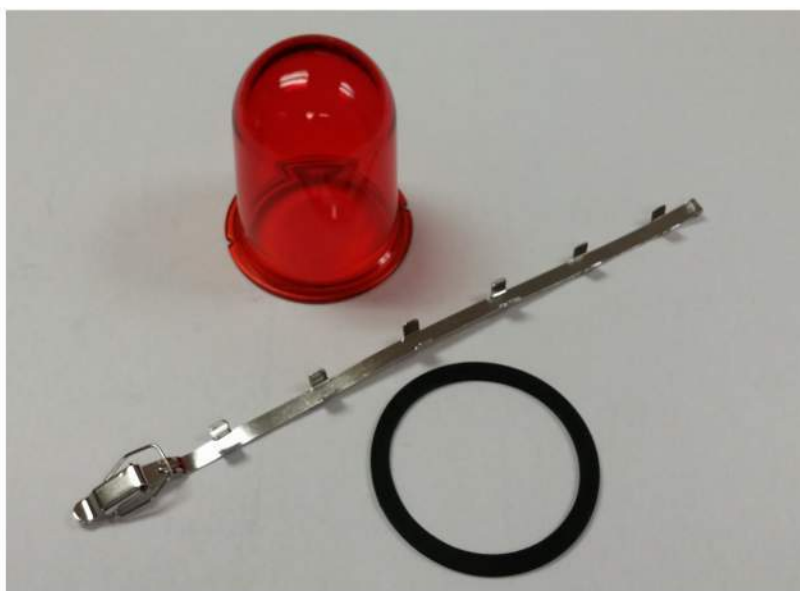
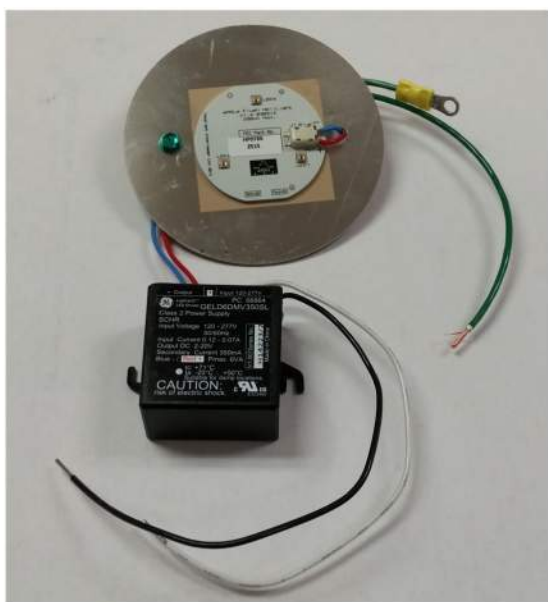
HP0468 Red

Misc. Parts:

HP0108 Squeeze Clamp

HP0114 Gasket, Globe/Base

HP0613 Light Base, Ground Style





FEC HELIPORTS & HELIPORT EQUIPMENT

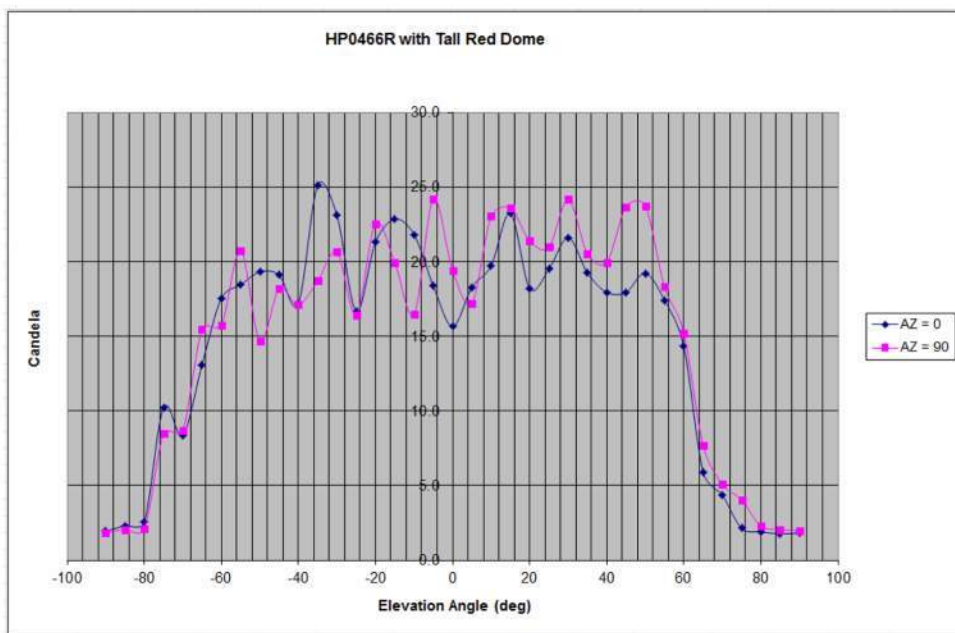
Designed, Manufactured and Installed...we do it all.

Summary intensity by bins

Results of the measurements are summarized in figure 4.

Elevation	Measured Intensity
0 to 90 deg	25.1 cd max
>20 to 90 deg	1.8 cd min
>10 to 20 deg	18.2 cd min
0 to 10 deg	15.6 cd min

Figure 4. Summary intensity by bins



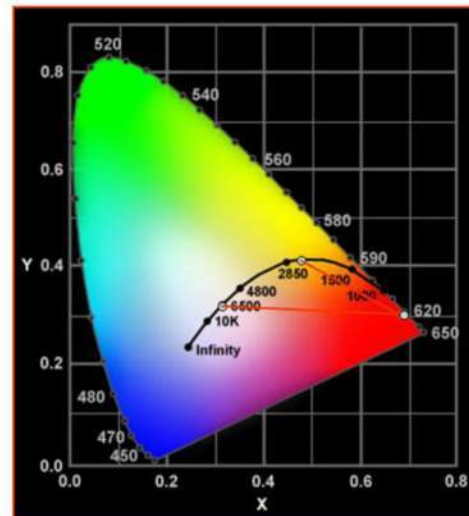
Illuminance in candela as a function of Elevation Angle in degrees

CIE Color and Dominant Wavelength

The average of the CIE color coordinates measured for the light is $x = 0.69$ and $y = 0.31$. This corresponds to a dominant wavelength between 620 and 622 nm depending upon the reference illuminant as indicated in figure 5.

CIE Color Coordinate HP0466R with Tall Red Dome

- Average CIE color coordinate
 - $x = 0.69$
 - $y = 0.31$
- Dominant Wavelength relative to Illuminant A ($x = 0.4475, y = 0.4075$)
 - 622 nm
- Dominant Wavelength relative to 6500 K
 - 620 nm



Total Light Output

The integrated light output was calculated to be 79 lumens. This was calculated based on two elevation sweeps at azimuth angles of 0 degrees and 90 degrees. Readings were integrated over the closest 5 degree spherical section. The variations in the illuminance plots make the lumen integration less accurate than for a similar well-behaved curve. Please note that the term "lumen" assumes that the light covers the photopic spectrum which is not the case for this saturated Red LED light.



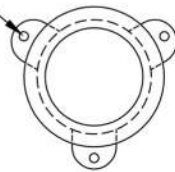
FEC HELIPORTS & HELIPORT EQUIPMENT

Designed, Manufactured and Installed...we do it all.

NOTES:

- 1) (3) 16 GAUGE WIRES
(1) BLACK
(1) WHITE
(1) GROUND

$\frac{5}{16}$ "(7.9375mm) DIA. HOLE
ON A $5\frac{1}{2}$ "(139.7mm) B.C.,
(3) PLACES AS SHOWN

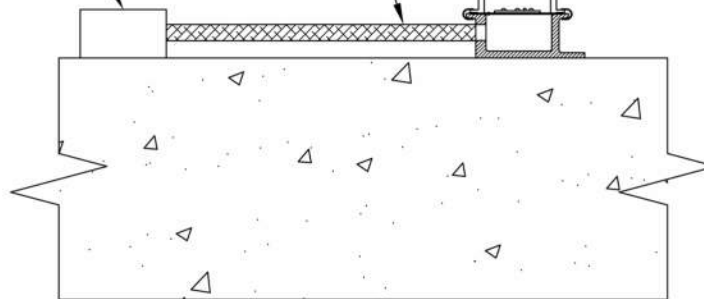


- 2) 1"(25.4mm) NPT LOCATED ON SIDE
OF GROUND STYLE AND BOTTOM OF
POLE STYLE

JUNCTION BOX TO BE
PROVIDED AND INSTALLED
BY ELECTRICAL CONTRACTOR.

FLEXIBLE CONDUIT TO
BE PROVIDED BY
ELECTRICAL CONTRACTOR.

TYPICAL LIGHT SURFACE
MOUNTED, HP0504G, HP0505G,
HP0506G, HP0507G, HP0582G
HP0590G, AND HP0790G



MOUNTING SURFACE CAN
BE STEEL, CONCRETE,
CONCRETE PAVER BLOCK,
SAFETY NETTING OR
OTHERS