

DUAL RED OBSTRUCTION LIGHT 120V TO 277V - NVG COMPATIBLE

HP0900 / HP0901



DUAL RED OBSTRUCTION LIGHT

FEC offers a dual obstruction light for added safety and minimal maintenance in remote locations.

FEC's dual obstruction lights are lightweight and available as steady on 24/7 or with photo cell for longer operating life.

KEY FEATURES:

- Hermetically sealed optical assembly with 3 year warranty
- Standard I/R for NVG compatibility
- Optional photo cell included for longer operating time
- Low profile glass lens for high visibility and safer operations
- Pre-wired for quick and easy installations

TECHNICAL DETAILS

OPERATING VOLTAGE:

120V

OPERATING POWER:

12 watts, .4 amps @ 120V

OPERATING TEMPERATURE:

- 13°F to 122°F
- 25°C to 50°C

OPERATING LIFESPAN:

LED's Rated to 50,000 hrs

LIGHT SOURCE:

Omni-Directional LED lamp
1x OSLOM SSL 150 LED w Optic
3x OSLOM BLACK IR DIODE

STANDARD PART NUMBERS:

HP0900 - Dual Steady Burning
HP0901 - Dual Steady Burning with Photoeye

DUAL RED OBSTRUCTION LIGHT 120V TO 277V - NVG COMPATIBLE

PHYSICAL CHARACTERISTICS:

LIGHT FIXTURE

- Height:
- 23" approx.
- Width:
- 15" approx

LIGHT UNIT

- Height:
- 4" approx
- Light Fixture Finish:
- Hard Anodize per MIL-A-8625 Type II, Class 1
- Width:
- 4 3/4"

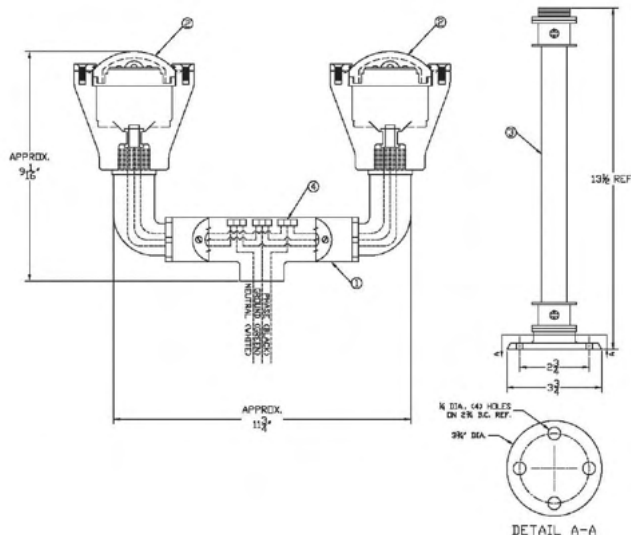
MATERIALS

- Housing:
- Cast Aluminum
- Fixture:
- Black Painted Steel
- Lens:
- Tempered Glass
- Color:
- Gray & Black

STANDARDS AND CERTIFICATIONS:

- FAA L-810 (EB98)
- ICAO Annex 14
- Cap 437
- CAA
- ETL
- UL1598

PRODUCT DETAILS:



THIS DOCUMENT IS THE PROPERTY OF FEC HELIPOINTS. INFORMATION CONTAINED IN THIS DOCUMENT SHALL NOT BE DISCLOSED TO OTHERS, USED FOR MANUFACTURING, OR REPRODUCED FOR ANY REASON WITHOUT THE EXPRESSED WRITTEN PERMISSION OF FEC HELIPOINTS.

REVISION BLOCKS			
REVISION	DATE	DESCRIPTION OF REVISIONS & ADDITIONAL NOTES	REVIEWED BY
A	05/01/2020	REPLACED THE HP0900 OBSTRUCTION LIGHT WITH 2" X 4" SPACED HP0900 OBSTRUCTION LIGHT	TNS

NOTES:
1. TEST UNIT AFTER ASSEMBLY PRIOR TO SHIPPING.

ITEM	QTY	DESCRIPTION	PART NO.
4	3	MAGO 3-WAY CONNECTOR	331-413
3	1	LIGHT POLE ASSEMBLY	HP0900
3	2	RED OBSTRUCTION LIGHT, LED	HP0900
1	1	CONDUIT ASSEMBLY	HP0900

PARTS LIST



DUAL LED OBSTRUCTION LIGHT ASSEMBLY POLE MOUNT STYLE			
DRAWN BY	CHECKED BY	APPROVED BY	
TNS	JAS	TS	
DATE: 05/01/2020	DWG SIZE: A	REV LTR: A	
SCALE: N/A			HP0900