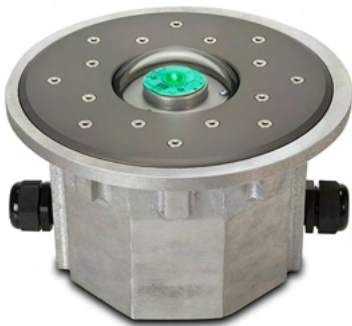


PAD-STAR® DC INSET SEMI-FLUSH - 2ND GENERATION

HP2100 SERIES

This newly redesigned Inset perimeter light is the latest addition to the FEC Heliports line of high quality LED lights.

Perimeter lights are one of the most important safety features on your heliport. They are used to mark and illuminate the FATO and TLOF as well as to help the pilot locate the pad and safely and during night operations and inclement weather conditions. The Inset light is used in place of an elevated heliport perimeter light at locations where the lights are frequently knocked down by aircraft and or maintenance vehicles. These lights are strong enough to drive over without damaging the light.



DC INSET PERIMETER LIGHT

KEY FEATURES:

- Hermetically sealed optical assembly to mitigate condensation
- Infra-Red equipment standard on all PadStar Series lighting
- NVG Compatible
- 10-Year Limited Warranty
- Engineered and designed to be universally compatible with any existing heliport lighting system
- Mil-spec anodized cast aluminum body suitable for the harshest environments
- Pre-wired for quick and easy installations

TECHNICAL DETAILS

OPERATING VOLTAGE:

12/24 VDC input from FEC
Controllers

OPERATING POWER:

6 Watts @ 0.350ma

OPERATING TEMPERATURE:

- 40°F to 131°F
- 40°C to + 55°C

OPERATING LIFESPAN:

LED's Rated to 50,000 hrs

LIGHT SOURCE:

1x Osram Visible LED
3x Osram IR Diodes

STANDARD PART NUMBERS:

Fixture only:

- HP2170F True Green (528nm)
- HP2173F Blue (470nm)
- HP2171F White
- HP2172F Yellow/Amber (590nm)
- HP2182F Red

With Light Base:

- HP2170FC True Green (528nm)
- HP2173FC Blue (470nm)
- HP2171FC White
- HP2172FC Yellow/Amber (590nm)
- HP2182FC Red

PAD-STAR® DC INSET SEMI-FLUSH - 2ND GENERATION

PHOTOMETRIC:

Standards
U.S. Department of Transportation, Federal Aviation Administration,
Memorandum, Heliport Perimeter Light for Visual Meteorological
Conditions. Engineering Brief No. 87

| Parameter | Requirement | Measured | Result |
|---------------------|---------------------|----------|--------|
| Min. Peak Intensity | 5 cd from 16° - 90° | 12.6 cd | Pass |
| Min. Peak Intensity | 10 cd from 0° - 15° | 23.3 cd | Pass |
| Min. Avg Intensity | 15 cd from 0° - 15° | 46.7 cd | Pass |

cd = Candela

Standards
International Civil Aviation Organization (ICAO):
Aerodromes, Annex 14, Volume 2, Fourth Edition, dated July 2013
Aerodromes, Annex 14, Volume 1, Seventh Edition, dated July 2016

| Parameter | Requirement | Measured | Result |
|---------------------|----------------------|----------|--------|
| Min. Peak Intensity | 3 cd from 21° - 90° | 12.6 cd | Pass |
| Min. Peak Intensity | 8 cd from 13° - 20° | 36.1 cd | Pass |
| Min. Peak Intensity | 15 cd from 11° - 13° | 51.5 cd | Pass |
| Min. Peak Intensity | 30 cd from 6° - 10° | 41.7 cd | Pass |
| Min. Peak Intensity | 15 cd from 2° - 5° | 30.9 cd | Pass |

Test Purpose - Performance Testing (Photometry and Chromaticity)

Test Dates - December 11, 2018

STANDARDS AND CERTIFICATIONS:

- ETL Listed to UL2108
- ETL Listed to UL1598 at -40° c to +55°c
- ETL Listed to CSA C22.2 NO. 250.0-08
- FAA EB#87, L-860HR & HS
- FAA AC 150/5390-2 (Latest Rev.), Heliports Design Guide
- ICAO Annex 14, Volume II
- UK CAP 437
- UK CAP 1264

PHYSICAL CHARACTERISTICS:

Overall Dimensions:

- Height Above Surface: 1.0"
- Body: 6 1/2" to 4 3/4"
- Mounting Flange: 10" Diameter

Mounting Pattern:

- 7 3/4" BHC, 8 equally spaced 1/4" holes, 82° C-Sink

Flange Material:

- 6061-T6, QQA-200/8

Body Material:

- 356-T6 Aluminum Alloy

Lens:

- Tempered Borosilicate

Hardware:

- 18-8 Stainless Steel

Finish:

- Hard Anodized per MIL-A-8625, Type II, Class 1

Mounting Can:

- Height 6-5/8 inches (168.27mm)
- Outside Diameter 11 inches (279.4mm)
- Inside Diameter 8-1/2 inches (215.9mm)

PRODUCT DETAILS:

NOTES:

- (3) 16 GAUGE WIRES

DC HOOKUP
RED = +12/24VDC
BLACK = -12/24VDC
GREEN = GROUND

AC HOOKUP
BLACK = 100-240 MAIN
RED = NEUTRAL
GREEN = GROUND

