

DUAL RED OBSTRUCTION LIGHT 120V TO 277V - NVG COMPATIBLE

HP0900 / HP0901



DUAL RED OBSTRUCTION LIGHT

FEC offers a dual obstruction light for added safety and minimal maintenance in remote locations.

FEC's dual obstruction lights are lightweight and available as steady on 24/7 or with photo cell for longer operating life.

KEY FEATURES:

- Hermetically sealed optical assembly with 3 year warranty
- Standard I/R for NVG compatibility
- Optional photo cell included for longer operating time
- Low profile glass lens for high visibility and safer operations
- Pre-wired for quick and easy installations

TECHNICAL DETAILS

OPERATING VOLTAGE:

120V

OPERATING POWER:

12 watts, .4 amps @ 120V

OPERATING TEMPERATURE:

- 13°F to 122°F
- 25°C to 50°C

OPERATING LIFESPAN:

LED's Rated to 50,000 hrs

LIGHT SOURCE:

Omni-Directional LED lamp
1x OSLOM SSL 150 LED w Optic
3x OSLOM BLACK IR DIODE

STANDARD PART NUMBERS:

HP0900 - Dual Steady Burning
HP0901 - Dual Steady Burning with Photoeye



WORLD HEADQUARTERS
5228 River Road
Cincinnati, Ohio 45233

PHONE: 513-577-5150
TOLL FREE: 1-877-HELIPAD

DUAL RED OBSTRUCTION LIGHT 120V TO 277V - NVG COMPATIBLE

PHYSICAL CHARACTERISTICS:

LIGHT FIXTURE

Height:
• 23" approx.
Width:
• 15" approx

LIGHT UNIT

Height:
• 4" approx
Light Fixture Finish:
• Hard Anodize per
MIL-A-8625 Type II,
Class 1
Width:
• 4 3/4"

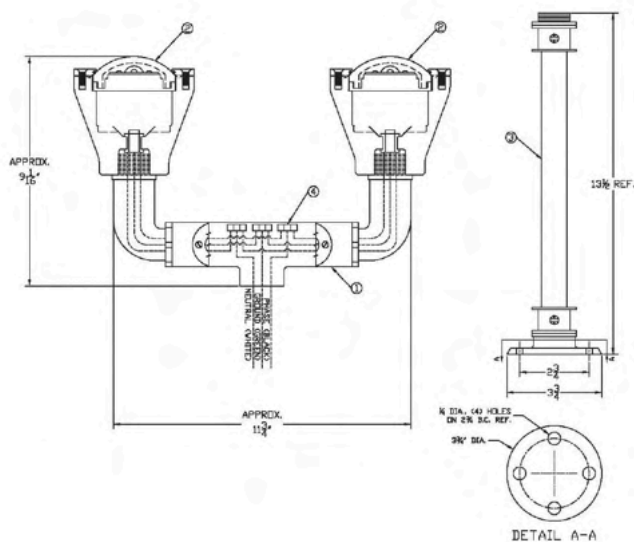
MATERIALS

Housing:
• Cast Aluminum
Fixture:
• Black Painted Steel
Lens:
• Tempered Glass
Color:
• Gray & Black

STANDARDS AND CERTIFICATIONS:

- FAA L-810 (EB98)
- ICAO Annex 14
- Cap 437
- CAA
- UL1598

PRODUCT DETAILS:



THIS DOCUMENT IS THE PROPERTY OF FEC HELIPOINTS. INFORMATION CONTAINED IN THIS DOCUMENT SHALL NOT BE DISCLOSED TO OTHERS, USED FOR MANUFACTURING, OR REPRODUCED FOR ANY REASON WITHOUT THE EXPRESSED WRITTEN PERMISSION OF FEC HELIPOINTS.

REVISION BLOCKS			
REVISION	DATE	DESCRIPTION OF REVISION & ADDITIONAL NOTES	REVIEWED BY
A		REPLACED THE HYPOTHETICAL OBSTRUCTION LIGHT WITH A DUAL LED OBSTRUCTION LIGHT	TNS

NOTES:
1. TEST UNIT AFTER ASSEMBLY PRIOR TO SHIPPING.

ITEM	QTY	DESCRIPTION	PART NO.
4	3	WAGO 3-WAY CONNECTOR	231-403
3	1	LIGHT POLE ASSEMBLY	HP0909
3	2	DUAL OBSTRUCTION LIGHT, LED	HP0908
1	1	CONDUIT ASSEMBLY	HP0908

PARTS LIST

 5228 RIVER RD.
CINCINNATI, OHIO 45233
FEC HELIPOINTS
508773 HELIPAD
508773 430-4323
WWW.FECHELIPORTS.COM

DUAL LED OBSTRUCTION LIGHT ASSEMBLY
POLE MOUNT STYLE

DRAWN BY	CHECKED BY	APPROVED BY
TNS	AJS	TS

DATE: 05/01/2020
SCALE: N/A

DWG SIZE: A
REV LTR: A

HP0900