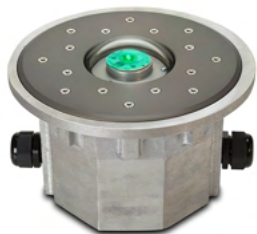


## DC INSET PERIMETER LIGHT 12/24 VDC OUTPUT FROM FEC CONTROLLER - NVG COMPATIBLE

### HP1900 SERIES



DC INSET PERIMETER LIGHT  
DISCONTINUED 1ST GENERATION



This newly redesigned Inset perimeter light is the latest addition to the FEC Heliports line of high quality LED lights.

Perimeter lights are one of the most important safety features on your heliport. They are used to mark and illuminate the FATO and TLOF as well as to help the pilot locate the pad and safely and during night operations and inclement weather conditions. The Inset light is used in place of an elevated heliport perimeter light at locations where the lights are frequently knocked down by aircraft and or maintenance vehicles. These lights are strong enough to drive over without damaging the light.

#### KEY FEATURES:

- Mil-spec anodized cast aluminum body suitable for the harshest environments
- Pre-wired for quick and easy installations
- Standard color in Anodized Grey
- Anodized Blue, Red, and Gold finish are special order

### TECHNICAL DETAILS

<b>OPERATING VOLTAGE:</b> 120/277V 50/60Hz input 12/24 VDC Output via FEC PLC Controller	<b>OPERATING LIFESPAN:</b> LED's Rated to 50,000 hrs	<b>STANDARD PART NUMBERS:</b> Fixture Only <ul style="list-style-type: none"> <li>• HP1971F True Green (528nm)</li> <li>• HP1972F Blue (470nm)</li> <li>• HP1973F White 6000K</li> <li>• HP1974F Yellow/Amber (590nm)</li> <li>• HP1982F Red</li> </ul> With Light Base: <ul style="list-style-type: none"> <li>• HP1971F True Green (528nm)</li> <li>• HP1972F Blue (470nm)</li> <li>• HP1973F White 6000K</li> <li>• HP1974F Yellow/Amber (590nm)</li> <li>• HP1982F Red</li> </ul>
<b>OPERATING POWER:</b> 6 Watts @ 0.350ma	<b>LIGHT SOURCE:</b> 1x Osram Visible LED 3x Osram IR Diodes	
<b>OPERATING TEMPERATURE:</b> - 40°f to 131°f - 40°c to + 55°c		

## DC INSET PERIMETER LIGHT 12/24 VDC OUTPUT FROM FEC CONTROLLER - NVG COMPATIBLE

### PHOTOMETRIC:

Standards  
U.S. Department of Transportation, Federal Aviation Administration,  
Memorandum, Heliport Perimeter Light for Visual Meteorological  
Conditions. Engineering Brief No. 87

Parameter	Requirement	Measured	Result
Min. Peak Intensity	5 cd from 18° - 90°	12.6 cd	Pass
Min. Peak Intensity	10 cd from 0° - 15°	23.3 cd	Pass
Min. Avg Intensity	15 cd from 0° - 15°	46.7 cd	Pass

cd = Candela

Standards  
International Civil Aviation Organization (ICAO):  
Aerodromes, Annex 14, Volume 2, Fourth Edition, dated July 2013  
Aerodromes, Annex 14, Volume 1, Seventh Edition, dated July 2016

Parameter	Requirement	Measured	Result
Min. Peak Intensity	3 cd from 21° - 90°	12.6 cd	Pass
Min. Peak Intensity	8 cd from 13° - 20°	36.1 cd	Pass
Min. Peak Intensity	15 cd from 11° - 13°	51.5 cd	Pass
Min. Peak Intensity	30 cd from 6° - 10°	41.7 cd	Pass
Min. Peak Intensity	15 cd from 2° - 5°	30.9 cd	Pass

Test Purpose - Performance Testing (Photometry and Chromaticity)  
Test Dates - December 11, 2018

### STANDARDS AND CERTIFICATIONS:

- FAA EB#87, L-860HR & HS
- FAA AC 150/5390-2 (Latest Rev.), Heliports Design Guide
- ICAO Annex 14, Volume II
- UK CAP 437
- UK CAP 1264

### PHYSICAL CHARACTERISTICS:

#### Overall Dimensions:

- Height Above Surface: 4 1/4"
- Body Diameter: 6 1/2"
- Mounting Flange: 8.0"

#### Mounting Pattern:

- 7 1/6" BHC, 4 equally spaced 5/16" holes

#### Flange Material:

- 6061-T6, QQA200/88
- 356-T6 Aluminum Alloy

#### Lens:

- Tempered Borosilicate

#### Hardware:

- 18-8 Stainless Steel

#### Finish:

- Hard Anodize per MIL-A-8625 Type II, Class 1