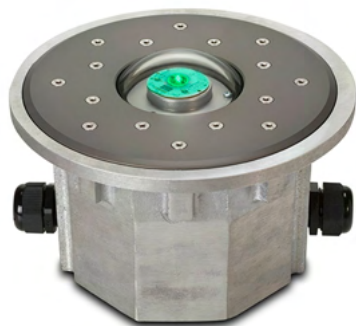


## PAD-STAR® AC INSET SEMI-FLUSH - 2ND GENERATION

### HP2000 SERIES

This newly redesigned Inset perimeter light is the latest addition to the FEC Heliports line of high quality LED lights.

Perimeter lights are one of the most important safety features on your heliport. They are used to mark and illuminate the FATO and TLOF as well as to help the pilot locate the pad and safely and during night operations and inclement weather conditions. The Inset light is used in place of an elevated heliport perimeter light at locations where the lights are frequently knocked down by aircraft and or maintenance vehicles. These lights are strong enough to drive over without damaging the light.



AC INSET PERIMETER LIGHT

#### KEY FEATURES:

- Hermetically sealed optical assembly to mitigate condensation
- Infra-Red equipment standard on all PadStar Series lighting
- NVG Compatible
- 10-Year Limited Warranty
- Engineered and designed to be universally compatible with any existing heliport lighting system
- Mil-spec anodized cast aluminum body suitable for the harshest environments
- Pre-wired for quick and easy installations

### TECHNICAL DETAILS

|  |  |   |
|--|--|---|
| <b>OPERATING VOLTAGE:</b><br>100-277 VAC, 50/60Hz                    | <b>OPERATING LIFESPAN:</b><br>LED's Rated to 50,000 hrs            | <b>STANDARD PART NUMBERS:</b><br>Fixture only: <ul style="list-style-type: none"> <li>• HP2070F True Green (528nm)</li> <li>• HP2073F Blue (470nm)</li> <li>• HP2071F White</li> <li>• HP02072F Yellow/Amber (590nm)</li> <li>• HP2082F Red</li> </ul> With Light Base: <ul style="list-style-type: none"> <li>• HP2070FC True Green (528nm)</li> <li>• HP2073FC Blue (470nm)</li> <li>• HP2071FC White</li> <li>• HP2072FC Yellow/Amber (590nm)</li> <li>• HP2082FC Red</li> </ul> |
| <b>OPERATING POWER:</b><br>6 Watts @ 0.350ma                         | <b>LIGHT SOURCE:</b><br>1x Osram Visible LED<br>3x Osram IR Diodes |   |
| <b>OPERATING TEMPERATURE:</b><br>- 40°F to 131°F<br>- 40°C to + 55°C |  |   |

## PAD-STAR® AC INSET SEMI-FLUSH - 2ND GENERATION

### PHOTOMETRIC:

**Standards**  
U.S. Department of Transportation, Federal Aviation Administration,  
Memorandum, Heliport Perimeter Light for Visual Meteorological  
Conditions. Engineering Brief No. 87

| Parameter           | Requirement         | Measured | Result |
|---------------------|---------------------|----------|--------|
| Min. Peak Intensity | 5 cd from 16° - 90° | 12.6 cd  | Pass   |
| Min. Peak Intensity | 10 cd from 0° - 15° | 23.3 cd  | Pass   |
| Min. Avg Intensity  | 15 cd from 0° - 15° | 46.7 cd  | Pass   |

**cd = Candela**

**Standards**  
International Civil Aviation Organization (ICAO):  
Aerodromes, Annex 14, Volume 2, Fourth Edition, dated July 2013  
Aerodromes, Annex 14, Volume 1, Seventh Edition, dated July 2016

| Parameter           | Requirement          | Measured | Result |
|---------------------|----------------------|----------|--------|
| Min. Peak Intensity | 3 cd from 21° - 90°  | 12.6 cd  | Pass   |
| Min. Peak Intensity | 8 cd from 13° - 20°  | 36.1 cd  | Pass   |
| Min. Peak Intensity | 15 cd from 11° - 13° | 51.5 cd  | Pass   |
| Min. Peak Intensity | 30 cd from 6° - 10°  | 41.7 cd  | Pass   |
| Min. Peak Intensity | 15 cd from 2° - 5°   | 30.9 cd  | Pass   |

Test Purpose - Performance Testing (Photometry and Chromaticity)  
Test Dates - December 11, 2018

### STANDARDS AND CERTIFICATIONS:

- FAA EB#87, L-860HR & HS
- FAA AC 150/5390-2 (Latest Rev.), Heliports Design Guide
- ICAO Annex 14, Volume II
- UK CAP 437
- UK CAP 1264

### PHYSICAL CHARACTERISTICS:

#### Overall Dimensions:

- Height Above Surface: 1.0"
- Body: 6 1/2" to 4 3/4"
- Mounting Flange: 10" Diameter

#### Mounting Pattern:

- 7 3/4" BHC, 8 equally spaced 1/4" holes, 82° C-Sink

#### Flange Material:

- 6061-T6, QQA-200/8

#### Body Material:

- 356-T6 Aluminum Alloy

#### Lens:

- Tempered Borosilicate

#### Hardware:

- 18-8 Stainless Steel

#### Finish:

- Hard Anodized per MIL-A-8625, Type II, Class 1

#### Mounting Can:

- Height 6-5/8 inches (168.27mm)
- Outside Diameter 11 inches (279.4mm)
- Inside Diameter 8-1/2 inches (215.9mm)

### PRODUCT DETAILS:

